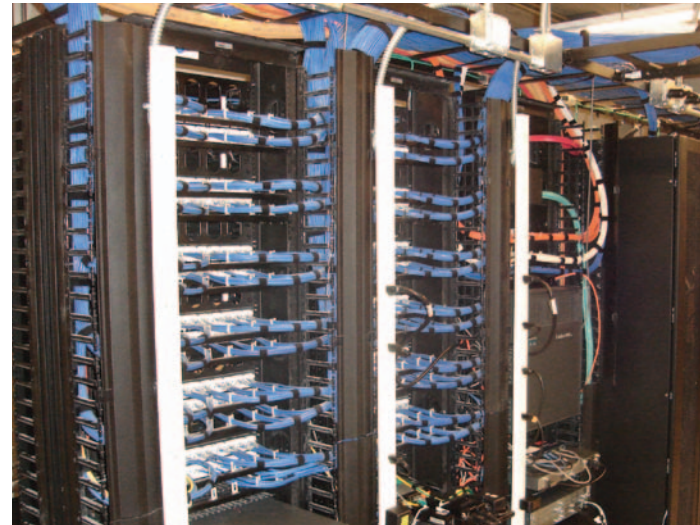


HOSPITALS



POWERING YOU **TO THE FUTURE**





Central Dupage Hospital

The newest addition to Central DuPage Hospital is the 275,000 sq. foot, 3 wing, 5 story Bed Tower project which holds a LEED 2.0 Certification and meets new building codes with complete Seismic Bracing of the structure. Titan Electric provided the installation of all high voltage distribution and feeders including: switch gear, panels, isolation equipment and emergency power, along with the installation of power and conduit for over 1,300 fixtures throughout. The new Bed Tower is comprised of nearly 1,700 lighting and power devices, custom Low Voltage lighting controls which we will be interfaced with the building BAS system, an ice & snow melt installation throughout the gutters and walkways and Low Voltage cable tray throughout. Our Low Voltage Division completed the installation of all Category 6A VOIP cabling, Security cabling, Nurse Call system, TV coaxial cabling and the build-out of all 15 computer rooms with redundant air blown fiber optic cabling and copper backbone. Throughout this process, Titan Electric implemented the use of the latest 3D BIM coordination tools to synchronize the installation process with all the trades.

We are also accompanying the Hospital in a complete renovation of their fully functioning ER, which will be over a six phase process while implementing Infectious Control procedures during construction. Our responsibilities are an extension of the Bed Tower with a complete newly upgraded Category 6A structured cabling system similar to the new Bed Tower installation.

Edward Hospital

The vertical expansion of the Edward Hospital, Naperville campus, adds 145,125 square feet to the existing Heart Hospital. The project included constructing three additional floors above a fully functioning hospital. Titan's involvement included not only the electrical infrastructure but also low voltage systems for the expansion of this project which added 64 new patient rooms. The expansion involved the installation of a 500KW generator, power distribution throughout, critical power, an emergency lighting system and complete conduit raceway. Also included is the expansion of the existing building Fire Alarm system, Nurse Call system and TV systems. We have also provided our expertise in the newly renovated specialty rooms throughout the existing hospital, which include: Pet-Scan room, two MRI rooms, CT-Scan room and a Neurobyplain room. On these individual projects, Titan Electric installed power and low voltage conduit and custom troughing, along with the installation of new examination lighting.



Northwest Community Hospital

Titan Electric completed the installation of High Voltage Campus Wide Distribution System at Northwest Community Hospital in Arlington Heights. The Distribution System includes a 30,000 foot High Voltage Cable Loop installed around the Campus, including installing the loop in the new 9 story Patient Care Tower. This medium voltage loop around the hospital enables a redundant service throughout the entire facility. The installation and transition from the old equipment to the new equipment was completed while maintaining the functionality of the hospital. Titan Electric also assisted the hospital in the transition from a ComEd owned and maintained system to an independently hospital-owned system. We are proud to have assisted Northwest Community Hospital.



“It is with great pleasure and confidence that I recommend Titan Electric for Hospital Projects of varying size and complexity. Titan demonstrated competence, professionalism and integrity on all of the projects performed for me.”

Wally Tarasewicz
Senior Project Manager
Mt. Sinai Hospital

Having recently completed several projects at Northwest Community Hospital in Arlington Heights which included the Behavioral Relocation and the Site Vault utilities as well as various projects at Edward Hospital in Naperville, I have great confidence in Titan’s ability to handle the complex systems and issues that arise in a healthcare environment and highly recommend your firm.”

Wayne Ziemer
Project Executive
Power Construction Company

“It is with great respect and appreciation that I generate this Letter of Recommendation for Titan Electric.

Throughout the extensive work history between Titan Electric and Pepper Construction, it has always been with great pleasure to consistently work with the quality, proactive and intelligent employees of Titan Electric. Titan Electric not only has the professional personnel to understand the electrical task being asked of them, but also has always proven to be able to adapt to the constant changing situations which arise on a construction project. Titan Electric manages to always perform their contracted scope of work, while never losing sight of what is important; the successful completion of the project on time, within budget, and most importantly, safely.

Please take this letter of recommendation into account while selecting your preferred Electrical Contractor and feel free to personally contact me with any other specific questions that you may have.”

Kevin Mraz
Project Manager
Pepper Construction Company

SERVICES IMPLEMENTED BY TITAN:

- 15KV Distribution Systems
- 3D BIM Coordination
- LEED 2.0 Certification
- Nurse Call Systems
- Fire Alarm Systems
- Emergency Lighting Systems
- Critical Power Systems
- Power Distribution Systems
- Lighting Control Systems
- Sumitomo Air Blown Fiber Backbone
- Cat6A VOIP Structured Cabling
- Audio/Visual Systems
- WLAN Cabling
- MATV Systems
- Paging Systems
- Security Systems
- CCTV Systems
- Access Control Systems
- Wireless Access Point Cabling

TITAN ELECTRIC

401 East North Avenue
Villa Park, Illinois 60181
Phone: 630.530.4422
Fax: 630.530.4622

www.titan-elec.com